



In This Newsletter

- **Santa Cruz Lightning Complex Fire**
- **Wayne's Weather Report**
- **QSO Today Virtual Ham Expo**
- **News & Updates - K3/K3S Options Interest Form**
- **K4 Update**

Santa Cruz Lightning Complex Fire

Message from Eric

We have received a number of inquiries asking if we are all safe and if Elecraft is directly threatened by the current lightning induced fires in northern California. (The one closest to the north of us is named the "CZU August Lightning Complex.") The winds and weather have shifted to favor the firefighters, pushing the fire back on itself and away from Santa Cruz. The coastal fog is back along with some light rains that have helped to reduce fire activity. The CalFire briefing has been much more upbeat since they built strong containment lines across the southern flank of the fire. As of September 3, the fires are 48% contained, with the communities on the southern plank of the fire no longer under evacuation orders.

All of our employees are safe, and evacuations have been removed for those who had to leave their homes. Both Wayne, myself and our families are safe, along with Elecraft. Both of us live some distance from the active fires. I am closer in Aptos, CA, 8 miles south of the coastal city of Santa Cruz. So far the fire is staying several miles north of Santa Cruz in the Santa Cruz mountains.

The Elecraft Factory is open and safe. It is located in Watsonville, CA, next to HW 1, another 10 miles south of where I live. It's in a small research park in an open area, well away from the forested areas and the mountains.

We will make sure to keep everyone updated if things change.

So How About a Weather Report?

This past few weeks has been very difficult for California and the Bay Area in particular. No one could have anticipated this at the beginning of the month (remember the Ham Expo?), since fire season is usually in October. But worst-case conditions have been brewing for some time. Thanks to drought and record temperatures everything has become tinder-dry (10 years ago we'd get a few winter days in the 30F range, now the lowest we ever see is 40F). Bark beetle larvae are no longer culled during winter, turning trees into an insect smörgåsbord. This has left forests all over the West vulnerable.

We had employees evacuated due to fires burning near their homes, and many of us elsewhere were on official alert status, thinking about what to pack. During this time the air quality has been horrendous (AQI over 200 some days). This has temporarily upended our strategy of keeping all the doors open to provide safe working conditions in the midst of the ongoing pandemic (remember that?) meaning many of us are working from home. My family had to buy N95 masks just to be able to run errands. We still need them about 50% of the time, though the firefighters are making progress.

In related news, one of our local field testers lost pretty much everything he owned, including his K4, due to one fire's unprecedented rampage through our coastal forests.

And still we persist.

All I can say, in the humbling face of nature, is...QRX.

73,
Wayne
N6KR



QSO Today Virtual Ham Expo Success

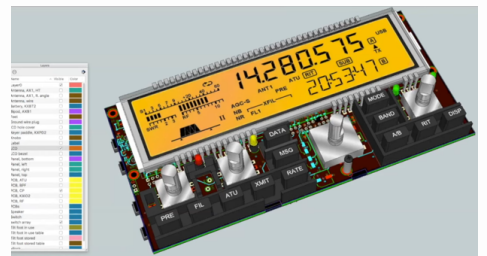
The first Virtual Ham Expo was a success! All of us at Elecraft had a great time chatting with our booth visitors over the Expo weekend.

Elecraft product demos presented at our booth were also a big success. Demos included a 3D look at the KX2 by Wayne, N6KR; a deep dive into the KPA1500 and KPA500 amplifiers by Bob W., K6XX; SOTA with our Swiss distributor Rene, HB9NBG & Carin, HB9FZC of Lutz Electronics; Classic Line and building your own radio by Dave,



W9FGU; and Scott, AK6Q, who talked about the KX2 and protective gear for your radio.

And if you missed Eric's K4 webinar, you can see it, along with all of our booth demos, on our [Elecraft YouTube Channel](#).



News & Updates

K3/K3S Upgrades and Options

We've heard from many of you that there is still interest in purchasing K3/K3S options that are out of stock or that we no longer offer. Please complete the K3/K3S Options Interest Form to select items that you're interested in purchasing. Once we've received enough interest in items, we will start limited production runs, and we'll contact you to confirm that we are ready to take your order.

[K3/K3S Options Interest Form](#)

K4 Update

High-Performance Direct Sampling SDR



Our first K4s are set to ship the second week of September. Our plan to ship in late August changed with the CZU Lightning Complex. The fire is among the top 20 most destructive fires in California state history with more than 1,100 structures burned in

Santa Cruz County. We have employees who had to evacuate and help family evacuate; and one employee who lost his home to the fire.

K4 shipments will start off slowly and ramp up as we receive deliveries of materials, and as our manufacturing team becomes more efficient in building and testing the units. One of our suppliers, located in Santa Cruz County, was also affected by the fires. Their employees are starting to return to the factory, so we expect more K4 materials to arrive soon. In the meantime, our manufacturing team continues to build K4s with the materials we have on hand.

How You Will Be Notified When Your K4 is Ready to Ship



New K4s in Production!

A member of Elecraft Sales Team will contact you by email when your K4 is ready to ship. They will verify your shipping address and provide you with any additional information regarding your order.

If your email address has changed, please complete the [New Email Address Form here](#).

Also, if you didn't see Eric's latest K4 presentation at the QSO Virtual Ham Expo last month, you can view it on our [YouTube channel here](#).

And if you haven't read it on the Reflector or heard them on the air, we have testers who continue to test K4s.



Listen for us on the air - We'll likely be on a K4!
Learn more about the K4 and pre-order [here](#).